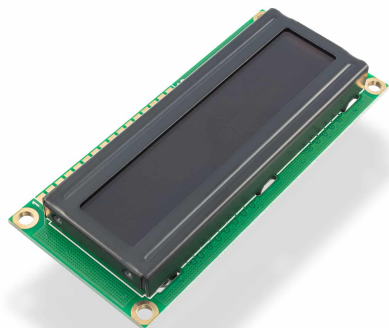




## LCD EKRAN 16X2 NARANČASTI/CRNI



**Weight**

34 g

---

### DESCRIPTION

LCD ekran s HD44780 kontrolerom omogućuje prikazivanje teksta, simbola, vrijednosti ili bilo čega drugoga što dolazi s Croduina/Arduina. Sposoban je pokazati 16 znakova u 2 reda te je koristan u mnoštvu projekata koji trebaju poslati jasno vidljivu i čitku izlaznu informaciju.

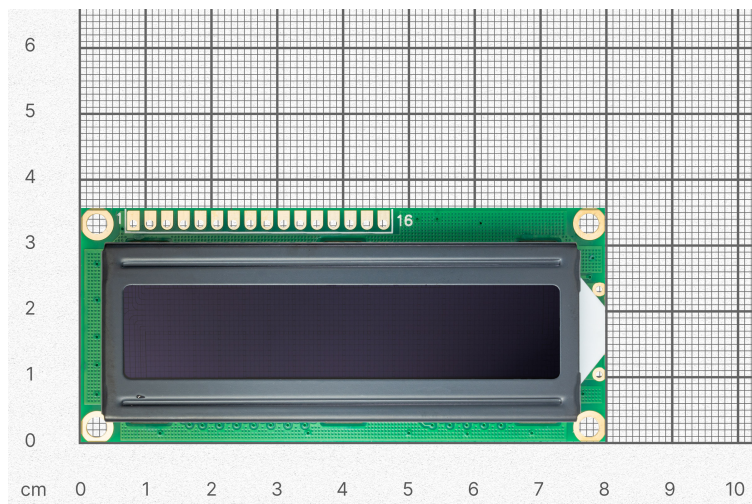
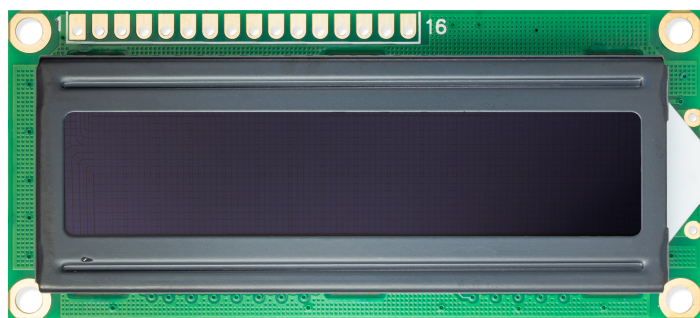
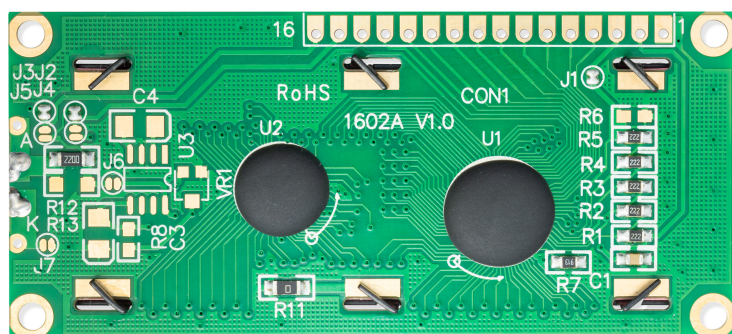
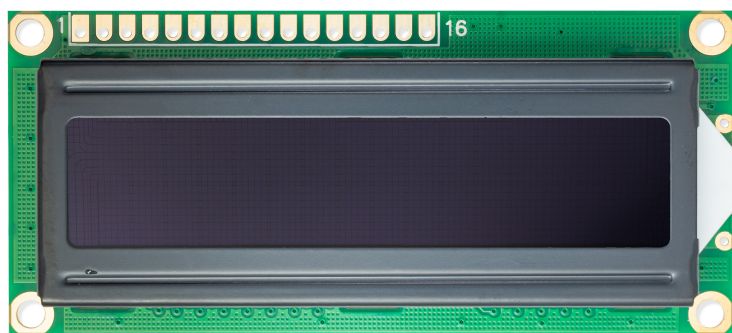
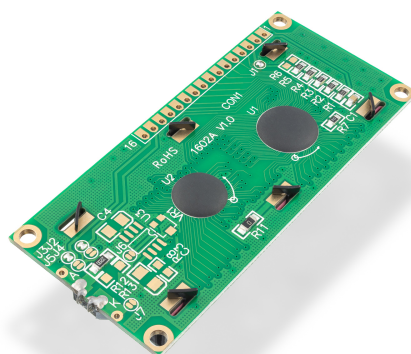
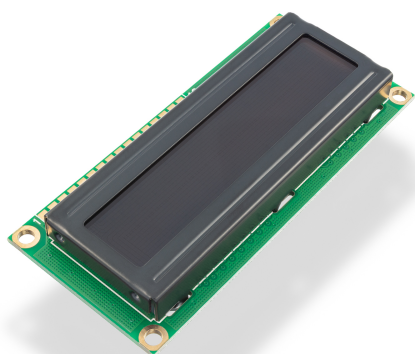
### FEATURES

- Boja znakova : narančasti
- Boja pozadine : crna
- Dimenzije : 80 x 36 x 12 mm
- Dimenzije ekrana : 64.5 x 16 mm
- Napon : 5V
- Dolazi s muškim 16-pinskim ravnim nezalemljenim headerom

### USEFUL LINKS

- [Datasheet](#)

### OTHER IMAGES



**Weight**

34 g